

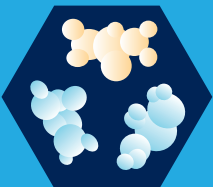
FOR YOUR GI-IMPAIRED PEDIATRIC PATIENTS

Peptamen JUNIOR®

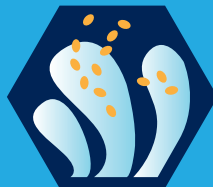


PEPTAMEN JUNIOR® is the only family of peptide-based formulas supported by **nearly 30 years of clinical experience and more than 25 published studies in pediatrics**.*

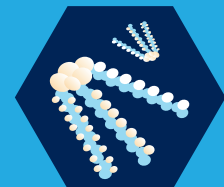
Switching from an intact protein formula to a PEPTAMEN JUNIOR® formula helped to manage symptoms and resulted in a decrease or elimination of prescribed medication for feeding intolerance.¹



Enzymatically hydrolyzed 100% whey protein to facilitate gastric emptying¹⁻³



Balanced peptide profile to support absorption and growth in patients with impaired GI function^{1,4,5}



60% of fat from MCT (medium chain triglycerides) to help facilitate fat absorption, which supports formula tolerance⁷⁻⁹

*Studies using the PEPTAMEN® family of formulas in pediatric populations.

Small peptides can make a big difference for small patients.

Small peptides are favorable for protein uptake and utilization.^{7,10,11}

PEPTAMEN JUNIOR® formulas are designed for absorption and tolerance with **SMALLER**, easy-to-absorb peptides.

This line delineates the position of intact milk proteins and represents alpha-lactalbumin, the smallest of the intact milk proteins with a molecular weight of 14 kDa.

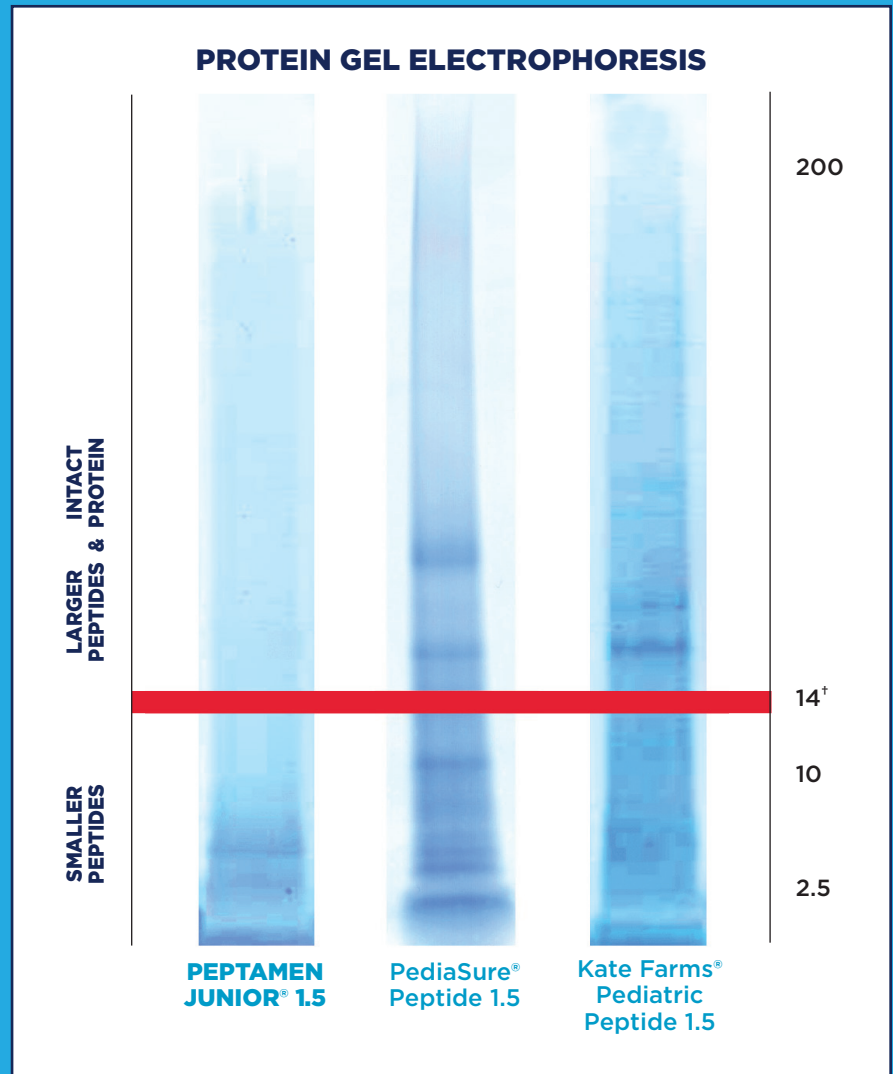
Bands above this line represent intact proteins and high molecular weight, larger peptides.
Bands below the line consist entirely of peptides and free amino acids.

Data on file.

Multiple batches tested using the SDS-PAGE method.

USE UNDER MEDICAL SUPERVISION

*Not for individuals with galactosemia.



REFERENCES: **1.** Minor G, Ochoa J, Storm H, Periman S. *Global Pediatric Health* 3:1-6.2016. **2.** Khoshoo V, Brown S. *Eur J Clin Nutr* 2002;56:656-658. **3.** Fried M, et al. *J Pediatr* 1992;120(4):569-572. **4.** Polk DB, et al. *J Parenter Enteral Nutr* 1992;16:499-504. **5.** Hussey TA, et al. *J Pediatr Gastroenterol Nutr* 2003;37:341. **6.** Elfadil OM, et al. *JPEN* 2022;46:626-634. **7.** Elfadil OM, et al. *NCP* 2023;38(2):318-326. **8.** Shah N, Limketkai B. *Practical Gastro* 2017;20-28. **9.** Sucher K. *NCP* 1986;1(3):146-150. **10.** Grimble GK, et al. *Clin Nutr* 1994;13(suppl):46. **11.** Raybould HE. *J Physiol Biochem* 2008;64:349-356.

To request samples and find out more information contact your Nestlé Health Science representative, call 1-800-422-ASK2 (2752), or visit www.NestleMedicalHub.com.

PediaSure® is a registered trademark of Abbott Laboratories Inc.
Kate Farms® is a registered trademark of Kate Farms Inc.

Unless otherwise noted, all trademarks are owned by Société des Produits Nestlé S.A. Vevey, Switzerland
© 2024 Nestlé.
PPTJ-14666-0524



TM

why better.

